

THE

# CLOISTER

AT ST. HENRY

MODEL INFORMATION & FLOOR PLANS

MODEL A – THE ROHLING

MODEL B – THE SIENER

MODEL C – THE ST. HENRY

MODEL D – THE BISHOP

COMPILED BY MARY STEINER 2010

Totals  
 A 80  
 B 42  
 C 87  
 D 34  
 Combined (Priests) 240

100 A	500 B
101 B	501 C
102 B	502 C-2Car
103 B	503 A
104 D	504 B
105 B	505 C
106 C	506 C
107 A	507 C
	508 C
	509 A
	510 C
	511 A
	512 C
	513 C
	514 D
	515 A
	516 B
	517 A
	518 C
	519 B
	520 C
	522 A

Basements  
 Mt. Carmel  
 717  
 718  
 719  
 720  
 722

100 C	300 D
101 A	301 C
102 B	302 Car
103 D	303 C
104 A	304 C-2Car
105 Clubhouse)	305 B
106 B	306 A
108 A	307 A
110 A	308 Car
	309 C-2Car
	310 A
	311 B
	312 A
	313 D
	314 C-2Car
	315 C

Siena  
 401  
 403  
 412

200 A	241 B	276 A	311 B
201 B	242 C-2Car	277 C	312 A
202 A	243 B	278 C	313 D
203 C	245 A	279 A	314 C-2Car
204 A	247 A	280 B	315 C
205 C-2Car	249 C	281 D	
206 C	251 C	282 A	
207 A	253 A	283 C	
208 C	255 A	284 D	
209 C	256 D	285 D	
210 C	257 B	286 C-2Car	
211 C	258 B	287 C	
212 A	259 D	288 A	
213 A	260 A	289 A	
214 A	261 C	290 A	
215 A	262 A	291 C-2Car	
217 C	263 D	293 D	
219 A	264 C-2Car	295 C	
221 A	265 C	300 D	
223 C	266 C	301 C	
225 B-2Car	267 D	302 Car	
227 B	268 Car	303 C	
229 C	269 D	304 C-2Car	
231 B	270 B	305 B	
233 C-2Car	271 A	306 A	
235 B	272 D	307 A	
237 Post Hse	273 B	308 Car	
239 Hovse	274 C-2Car	309 C-2Car	
240 Car	275 D	310 A	

MILES COURT

200 C
202 D
204 A
206 B

GLENMARY COURT

900 A
901 A
902 B
903 B
904 A
905 A
906 D
907 B

MARQUETTE DRIVE

MT. CARMEL PLACE

SIENA DR.

800 A  
801 A  
802 A  
803 C  
804 C  
805 D  
806 D  
807 B  
808 D  
809 D  
810 C  
811 D  
812 B  
813 D  
814 A  
815 B  
816 B  
817 A  
818 C-2 car  
819 C-2 car  
820 C  
822 C-2 car

700 C  
701 A  
702 D  
703 C-2 car  
704 C  
705 C  
706 A  
707 A  
708 D  
709 A  
710 A  
711 D  
712 A  
713 D  
714 B  
715 C  
716 A  
717 B  
718 C  
719 C-2 car  
720 A  
722 B

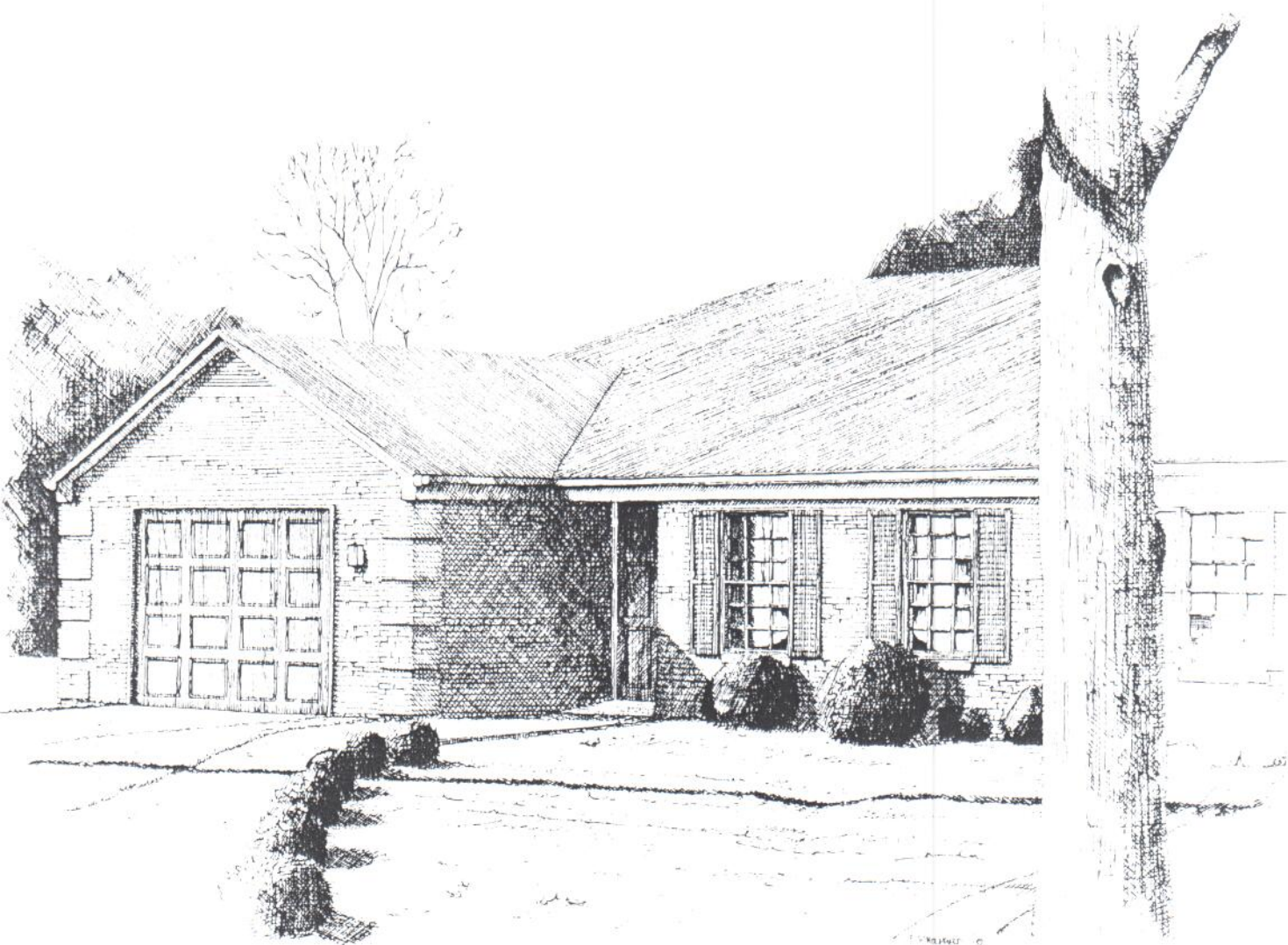
429 A  
430 A  
431 A  
432 B  
433 D  
434 A  
435 A  
436 A  
437 B  
438 A  
439 A  
440 A  
441 B  
442 A  
443 A  
444 C  
445 D  
446 G  
447 C  
448 C  
449 D  
450 B  
451 C  
452 C-2 car  
454 C-2 car

428 A



B+ indicates "B" Model with 2 Car Garage (We have 1)  
 C+ " " " " " " " " " " (We have 24)





THE ROHLING

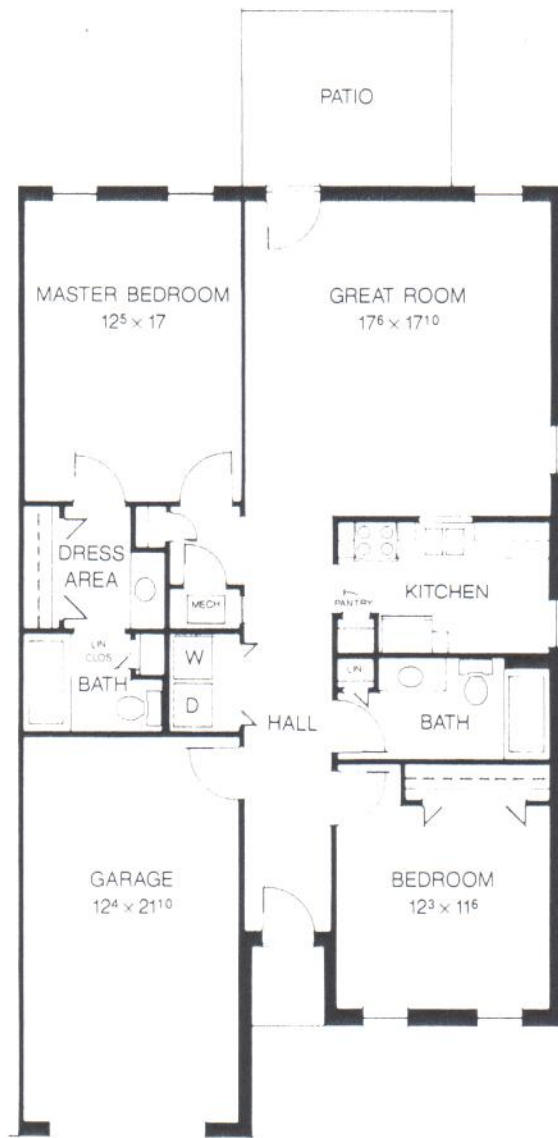
2 bedroom, 2 bath, 1-car garage  
(1,290 sq. ft.)

MODEL A

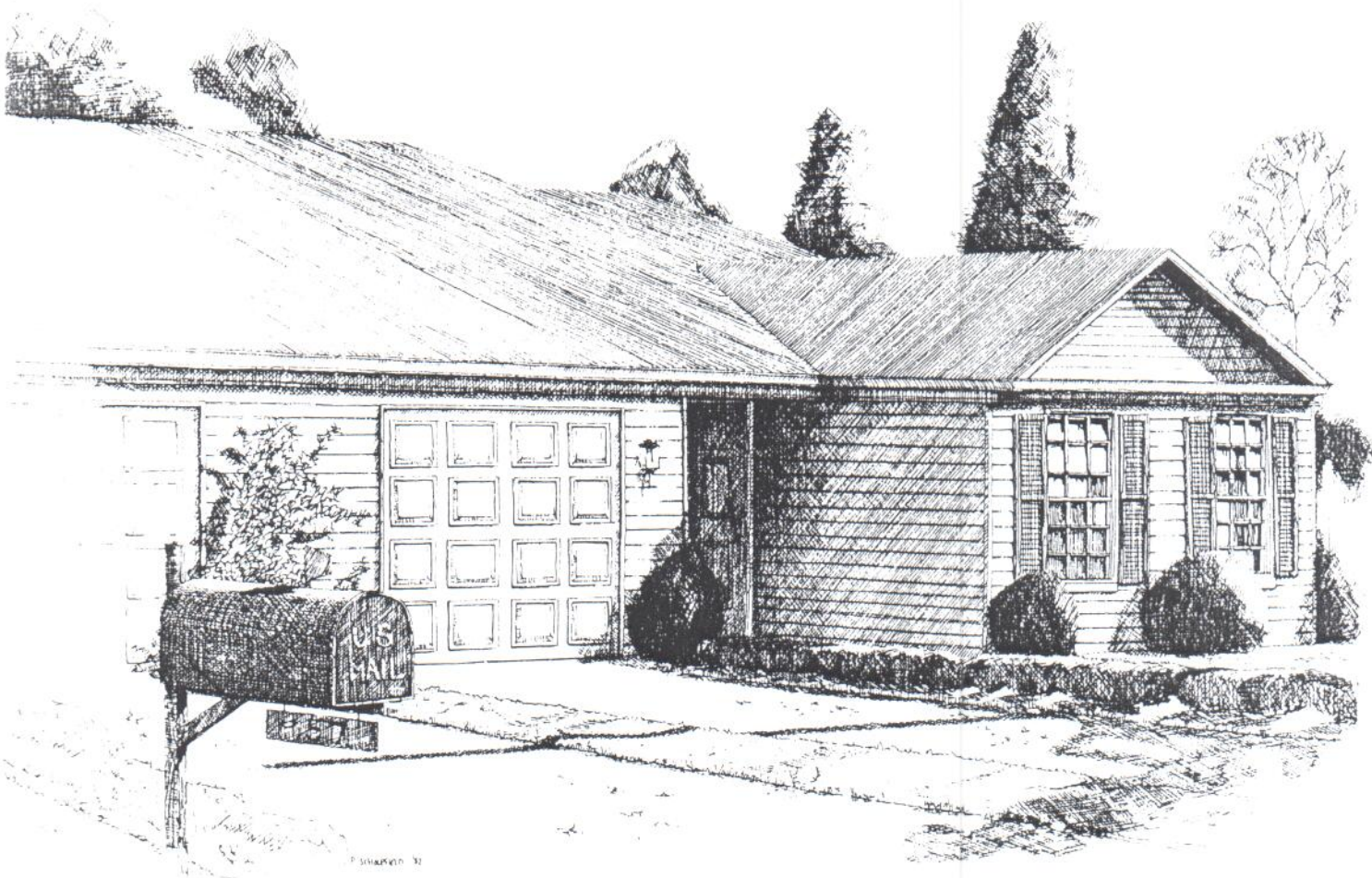


# THE ROHLING

2 bedroom, 2 bath, 1-car garage  
(1,290 sq. ft.)



MODEL A



P. SHAWKIN 92

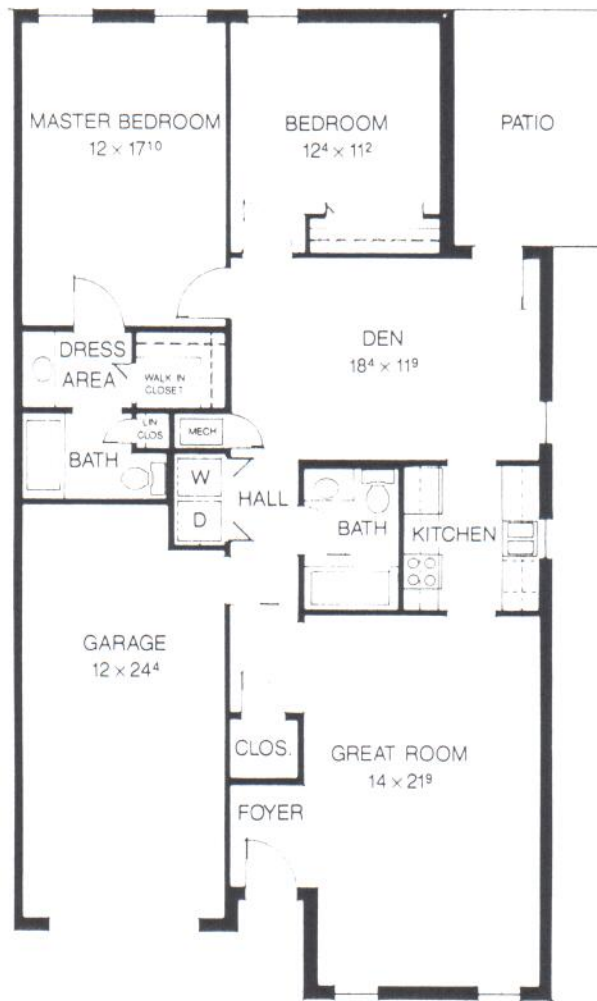
### THE SIENER

2 bedroom, 2 bath, den, 1-car garage  
(1,385 sq. ft.)

MODEL B

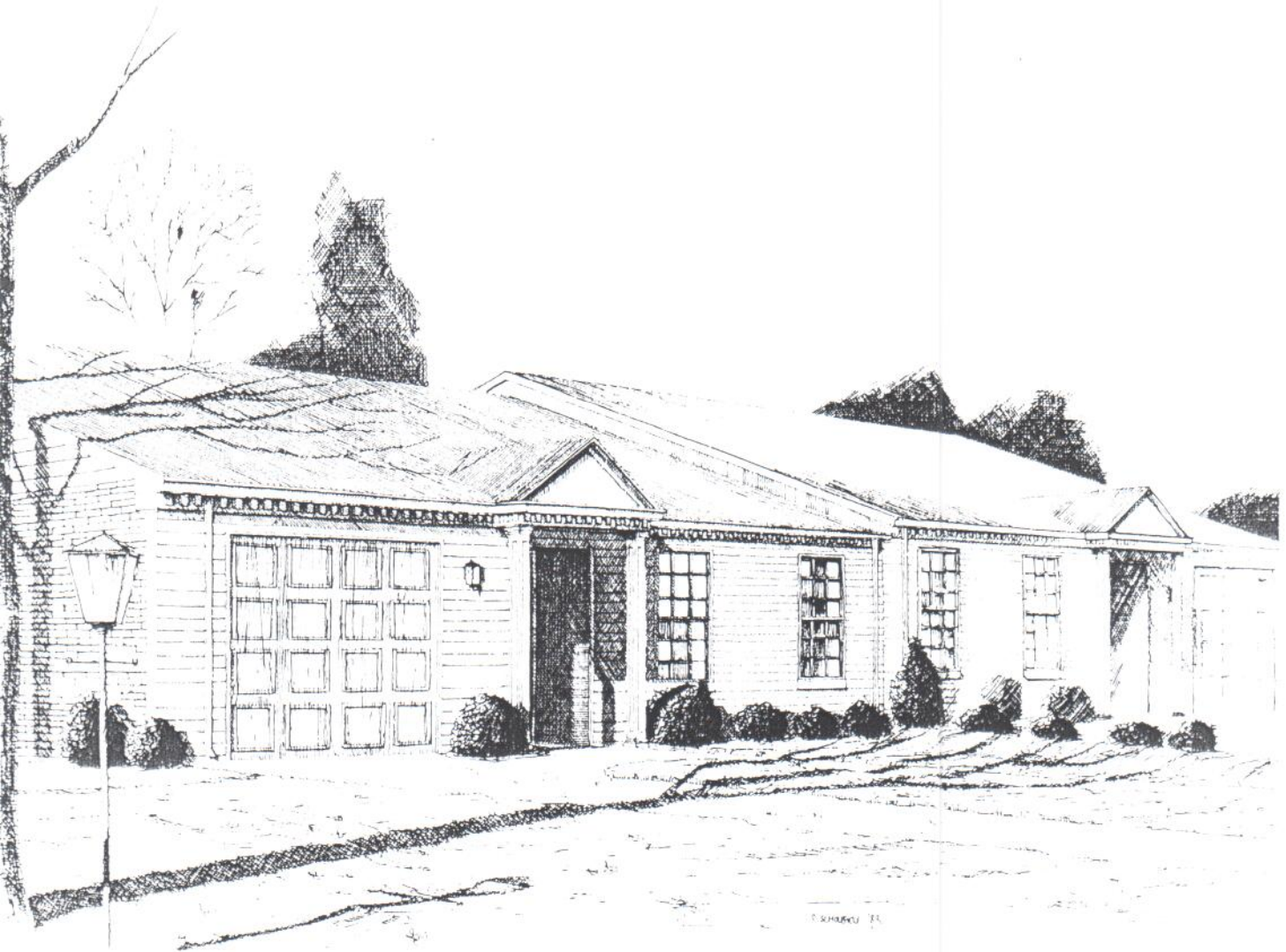
# THE SIENER

2 bedroom, 2 bath, den, 1-car garage  
(1,385 sq. ft.)



MODEL B





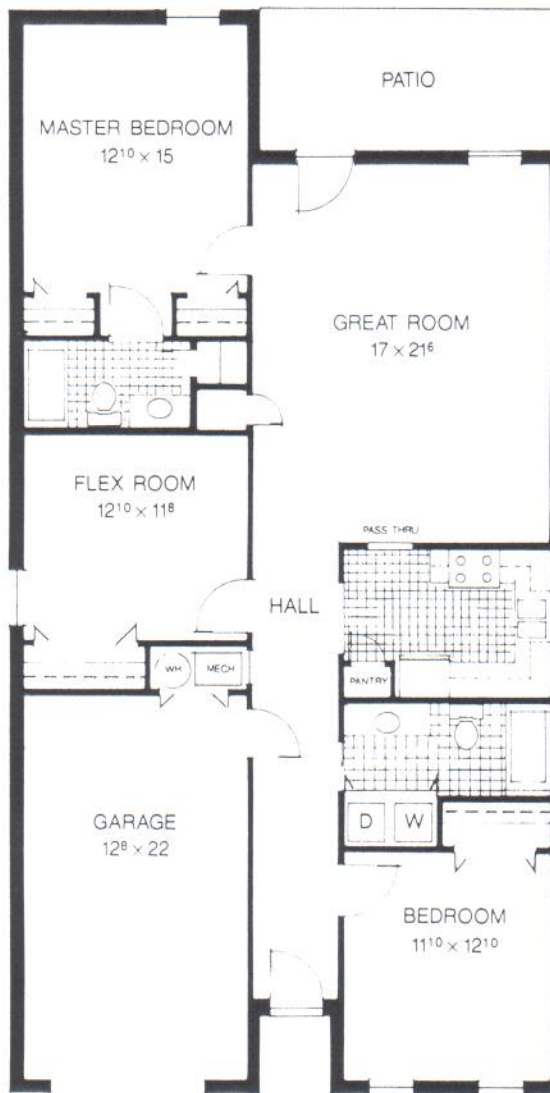
THE ST. HENRY

2 bedroom, 1 flex room, 2 bath,  
1-car garage (1,465 sq. ft.)

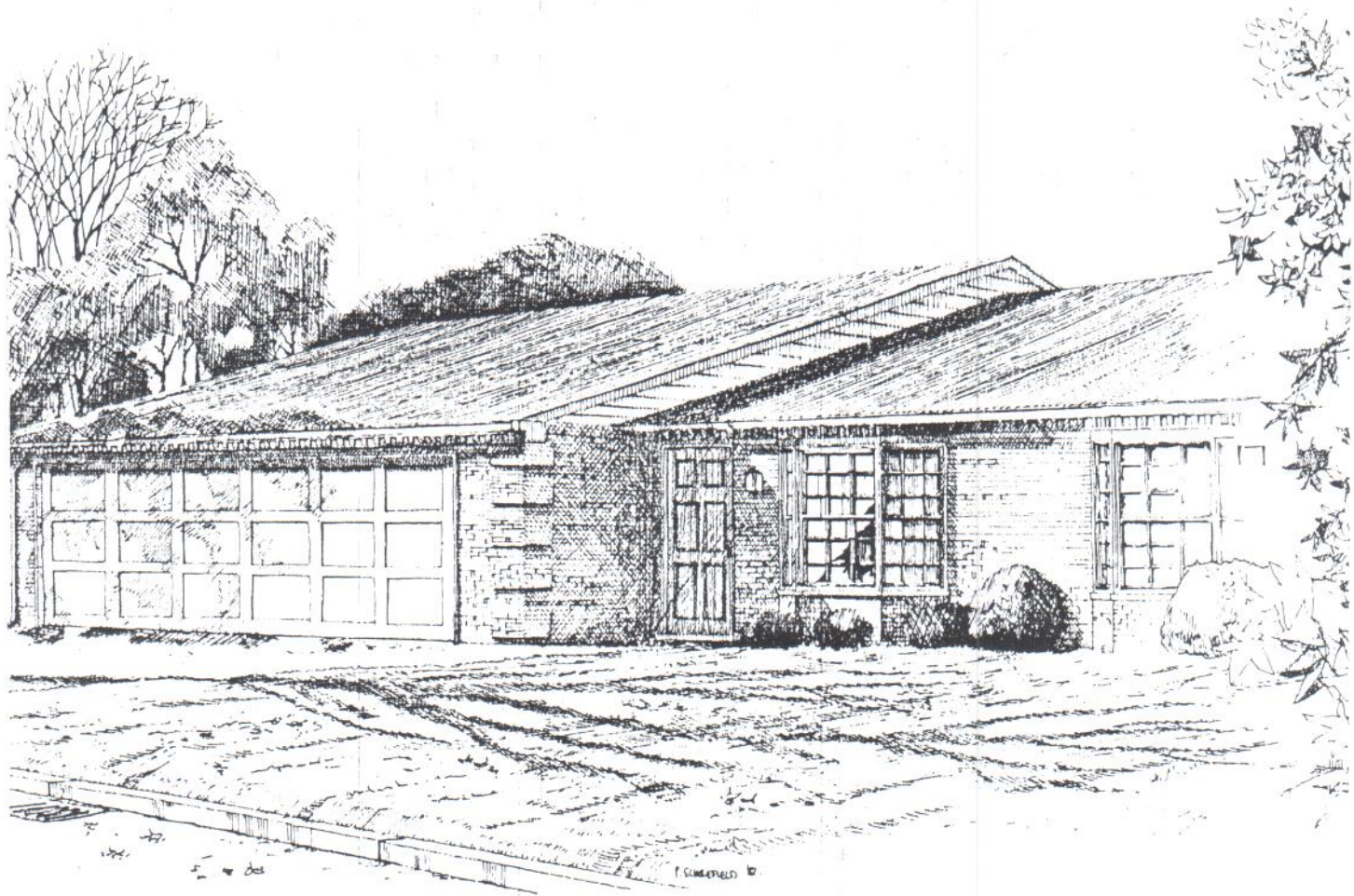
MODEL C

## THE ST. HENRY

2 bedroom, 1 flex room, 2 bath,  
1-car garage (1,465 sq. ft.)



MODEL C



**THE BISHOP**

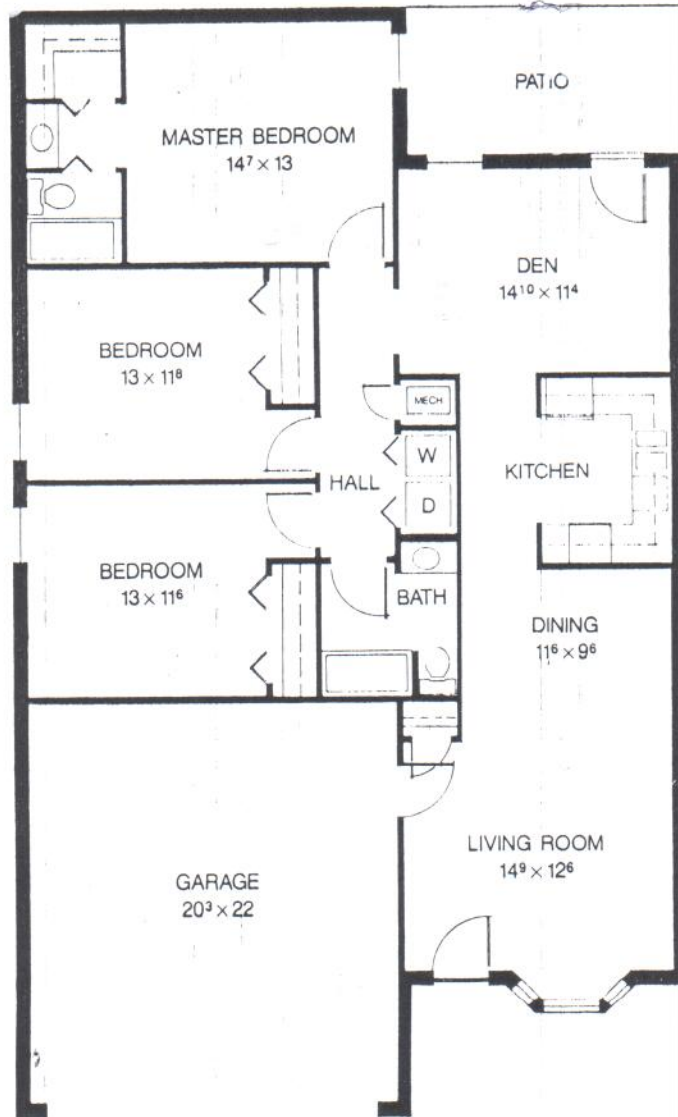
3 bedroom, 2 bath, den, 2-car garage  
(1,530 sq. ft.)

**MODEL D**



# THE BISHOP

3 bedroom, 2 bath, den, 2-car garage  
(1,530 sq. ft.)



MODEL D